



EC i-Connect
True value in Signage

DISPLAY SOLUTION

PRODUCT PROFILE
YOUR INTEGRATED

WWW.ECLINE.COM.HK

An aerial photograph of the Hong Kong skyline at sunset. The city is densely packed with skyscrapers and buildings, with the Victoria Harbour visible in the background. The sky is a warm orange and yellow, and the water reflects the city lights. The text "WHO WE ARE" is overlaid in large, white, serif capital letters on the left side of the image.

WHO

WE

ARE

UNIQUE
RELIABLE
EXCLUSIVE
TRUSTWORTHY

An aerial photograph of the Hong Kong skyline at sunset. The Victoria Harbour is in the center, with numerous skyscrapers lining the waterfront. The sun is low on the horizon, casting a warm orange glow over the city. In the background, mountains are visible under a clear sky. The text "ECLINE IS NEARBY YOU EVERYWHERE" is overlaid in large, white, serif capital letters on the right side of the image.

ECLINE IS NEARBY YOU EVERYWHERE

Your true partner

Specialist on POS Peripherals with display solution,
Touch Monitors, Digital Signages with solution,
Kiosks, Cash Drawers, Scanners and Printers.
Competitive pricing! Let's walk together to achieve a great success.

INDEX

CASE STUDY

Retail Merchandizing
Hotels, Apartments, and Property Management
Food and Beverages
Welfare Community and Government Departments
Health and Beauty Care
New Family Members

MEDIA BOX

ECMB002-S

WALL MOUNT DIGITAL SIGNAGE

EC-WDS32I / 43I / 49I / 55I / 65I

FLOOR STAND DIGITAL SIGNAGE

EC-FDS43I / 49I / 55I / 65I

DOUBLE SIDE ULTRA THIN

EC-WSS55A

DOUBLE SIDE DIGITAL SIGNAGE WITH TRANSPARENT BOX

EC-TSS43C / 55C

TRANSPARENT BOX DIGITAL SIGNAGE

EC-BCS55A

DOUBLE PANEL DIGITAL SIGNAGE

EC-WSS43A / 55A

TRANSPARENT PANEL DIGITAL SIGNAGE

EC-TDS55A/B

BAR TYPE DIGITAL SIGNAGE

EC-WDS37M

COMBINATION VIDEO WALL

EC-WBS49A/ 55A





CASE STUDY

A. RETAIL MERCHANDIZING

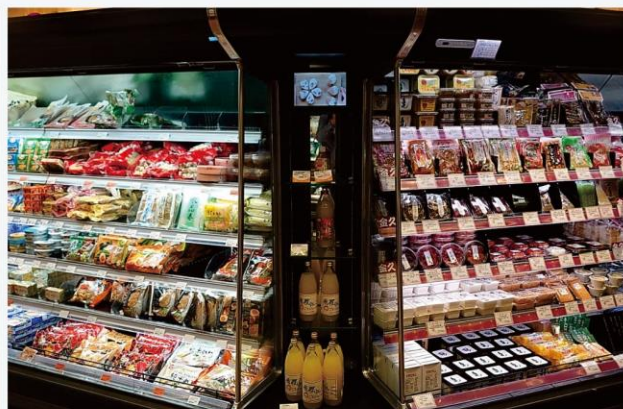


Eye-catching/ Recognition:

Have you ever wondered, what makes a successful advertisement stand out from one another? If yes, digital signage is your new best friend. On digital signages, coloured, vivid, and dynamic graphics are displayed, which substantially catches the attention of hidden customers and potentially links to future business opportunities.

Space Efficient:

Rent is often a big concern for many businesses. Maximizing the influence on customers with a limited budget, space-saving becomes increasingly important. Digital signages featuring a hung-down option and dual-screen display help to utilize every square foot of your store.



Hassle-free:

With the EC i-Connect system, operational issues are no longer a problem. EC Line's operating system maximizes your convenience by making sure the display contents could be modified in anywhere of the world. The display signages could also operate precisely under a pre-coded schedule to ensure contents are displayed at the specific time. Enjoy the user friendly moment, to display whatever you want, whenever you want.

Does Size Really Matter ? :

The short answer to the question is, yes, size does matter. We provide the flexibility for you to adjust the size of digital signages. This means you could install them everywhere. Some examples include the entrance, next to a product, or display windows.

B. HOTELS, APARTMENTS, AND PROPERTY MANAGEMENT

“For the moment to the moment”, a high demanding management style within Hotels, Apartments and Property Management, Digital Signage is able to commence an efficient message and effective notices to their customers wherever they are.



Emergency Announcement and Alerts :

Safety and Security issues are one of the important roles to manage the reputation of its own; in terms of accuracy of responding with immediate action requires. Digital Signage is your best partner while it delivers in 3 seconds.

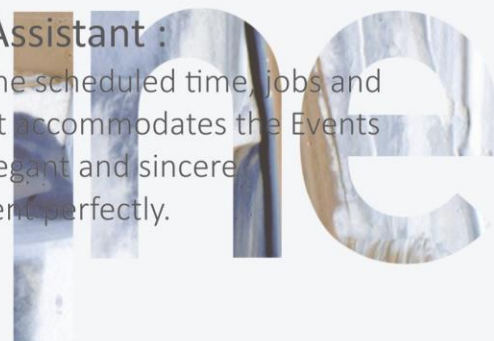


Concierge Service :

A typical section to provide all-rounded information such as in-house facilities, directions, dining places and transportation. By using different cuttings, photos and videos, it tells you without running around.

Events Assistant :

Through the scheduled time, jobs and graphics, it accommodates the Events with an elegant and sincere environment perfectly.



C. FOOD AND BEVERAGES



Displaying Menus Digitally:

Traditionally, display menus were switched manually in between different mealtimes, which is highly inconvenient and time-consuming. By using digital signages, different menus could be switched at the tip of your fingers.

Calling for Attention:

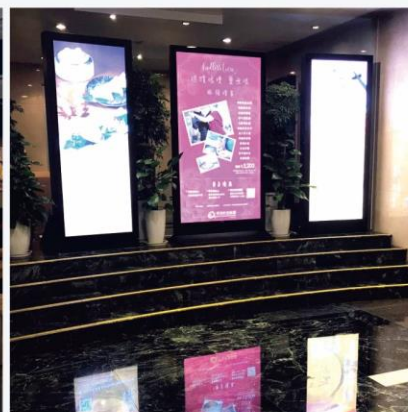
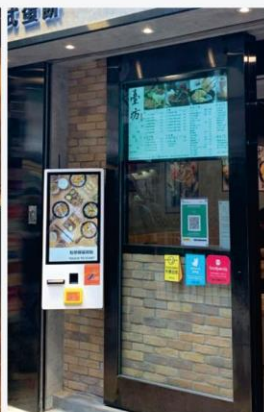
"Location, location, location", is one of the most critical factors in attracting consumers' attention. Nonetheless, the best resources cannot be shared by everyone. As a solution, digital signages could enhance the presence of your business and achieve promotional purposes at once.

Saving the Planet While Lowering Costs:

Are you tired of paper flyers? Digital signage is a paperless solution to the mundane and eco-un friendly marketing approach. Can you imagine how many trees you could save through digitalizing?

Engagement:

Displaying moving animations could sharply capture the attention of passing pedestrians and customers who are in line. Digital signages allow for all kinds of animations, including but not limited to promotions, mini-games, health tips, and appetizing dishes on your menu.



D. WELFARE COMMUNITY AND GOVERNMENT DEPARTMENTS

To take up the social responsibilities, as a regional volunteer group to provide free medical services and to maintain a caring and harmonious community. By using the Digital Signages to share many useful information and sponsor other community projects particularly in relation to social welfare and education.

Direct visual with videos, sound, pictures or images are the easiest and the fastest way to connect with all ages. Especially to the seniors, children or even disabilities, Digital Signages are performing its' job beautifully.



“Vision, Mission and Value”, Immigration Department , a professional team who is performing their duty to safeguard national sovereignty, security and development interests. They ensure each member of the public with respect while Digital Signages assist to enhance the specific procedures, policies to meet specific needs or rules are highlighted.

As a part of the government bodies, Security remains sensitive and majority to ever-changing social. Digital Signage is 100% loyal with high security for the data within. Saluted !!

ing

E. HEALTH AND BEAUTY CARE



Maintain a healthy environment:

It is essential to remind the public to stay aware of health hazards.

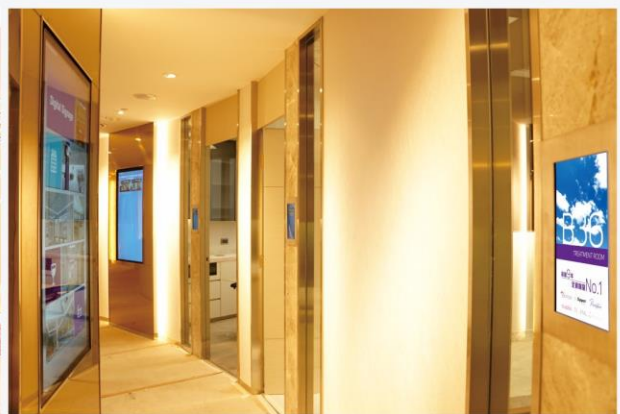
Digital signage could share health tips as well as promoting your related business. The combination of both creates a healthy business environment and make everybody feel cared for.

Keep Customers Up to Date:

What a challenging business, Beauty trends and products launch to treasure all “Beauty holic”! Digital signage, mission accomplished, is an excellent channel to fashion customers with the newest spirits and promote your business’s key products.

Entertainment and Interaction:

Do you feel bored while waiting? Often, consumers are attracted by the colourful graphics and fun activities around them during a boring wait. Walt Disney once said – “People spend money when they feel good”, and with EC Line’s digital signage, customers experienced extraordinary entertainment to uplift their interest in attractions.



F. NEW FAMILY MAMBERS



Petrol Filling Stations:

Shell, one of the most well-known petrol companies uses EC Line's digital signages to maintain their daily operation. From listing prices to displaying advertisements outdoor, digital signages have already become an inseparable part of their "Staff".

Clubhouses:

Beautiful and vibrant graphics are attention catchers. This makes digital signage a direct and effectively engaged to promote new facilities, deliver announcements, and provide directions to tenants and visitors. Details are what make a business stand out, let's embrace a cosmopolitan decoration.



Home Improvement:

Apart from the commercial world, the usage of digital signages is unlimited. Home décor inspires a contemporary and loving ambiance in your family. Want to leave a note for your family members? Take a trip down memory lane? Watch a movie and spend some quality time with your family? EC Line's digital signages have you all covered.



Midland Realty:

To improve the aesthetics of your storefront and be competitive! Realty companies practice "Time is Money" to use Digital signages present available units residentially or non-residentially instead of posters and paper advertisements., "Money is Time" !





ECMB002-S		
Main	CPU	Quad-Core ARM Cortex A17 (Up to 1.8GHz)
	GPU	ARM Mail-764
	Memory	DDR3 2GB
	Storage	8GB eMMC Flash (4GB Occupied by O/S, 4GB Available)
	Operation System	Android OS
	Network	Wireless / Lan
	Fan / Fanless	Fanless
	Media	MPEG1 / MPEG2 / MPEG4 / H.264 / H.265 / WMV / MKV / TS / flv / MP3 / JPG / JPEG / BMP / PNG / GIF / etc.
Interface	I/O Ports	USB x 4 HDMI (Supports 1920×1080 Full HD Resolution) x1 TF card slot x1 RJ45 Ethernet port x1 VGA x1 RS232 x1 OTG x1 Audio x1
Physical	Dimension	230 W × 130 D × 30 H (mm)
	Weight	615 g



WALL MOUNT DIGITAL SIGNAGE

		EC-WDS32I	EC-WDS43I	EC-WDS49I	EC-WDS55I	EC-WDS65I
Display Panel	Panel Size	32 inch	43 inch	49 inch	55 inch	65 inch
	Display Area (H x V)(mm)	699.7 × 394.3	944.2 × 530.5	1077 x 605.2	1212.6 × 682.4	1431.5 × 805.5
	Display Mode	16 : 9				
	LCD Type	LG- IPS				
	Resolution	1920 × 1080	3840 x 2160 (4K UHD)			
	Brightness	500 cd/m²				
	Response Time	8 ms				
	Color System	PAL / NTSC / Auto				
	Field Frequency	60 Hz				
	Contrast Ratio	1000 : 1	1400 : 1			
	View-angle (up/down/left/right)	89° / 89° / 89° / 89°				
Media Format	System	Android Operating System				
	Royal TS	B/S TS				
	Media Format	avi/ flv/ mkv/ mp4 / mpeg / rm / rmvb/ ts/ wmv				
	Text Format	avi/ flv/ mkv/ mp4 / mpeg / rm / rmvb/ ts/ wmv				
	Picture Format	bmp / gif / jpeg / jpg / png				
System	CPU	Quad-Core ARM Cortex A17		Quad-Core ARM Cortex A53		
	DDR	DDR3 2GB	DDR4 2GB			
	Internal Memory	EMMC 8GB (4GB Available)				
	Wireless	Onboard 802.11b/g/n				
Interface	HDMI	N/A	HDMI IN x 1			
	Ethernet	Rj45 10M/100M Ethernet x 1				
	USB	USB2.0 x 1				
Power	Voltage	AC 100- 240V , 50/60Hz				
	Consumption- Typical	≤ 80W	≤ 80W	≤ 110W	≤ 130W	≤ 140W
	Consumption- Standby	<1W				
Physical Specifications	Frame Material	Aluminum + Metal Back Cover + Tempered Glass Panel				
	Dimensions (W xH xD) (mm)	751.8 × 446.2 × 53	994.6 × 582.9 × 52.6	1127.2 × 657.4 × 52.6	1263 × 733.8 × 52.6	1482 × 857 × 52.6
	Net Weight (KG)	12.5	21.0	25.0	30.0	38.0
Environment	Operating Temperature	0 to 50 °C				
Conditions	Storage Temperature	-20 to 60 °C				
Accessories	Included	Power Cord / Standard Wall Mount Kit				

FLOOR MOUNT DIGITAL SIGNAGE



	EC-FDS43I	EC-FDS49I	EC-FDS55I	EC-FDS65I
Panel Size	43 inch	49 inch	55 inch	65 inch
Display Area (H x V)(mm)	532 x 943	606 x 1075	680 x 1209	806 x 1430.5
Display Mode	16 : 9			
LCD Type	LG- IPS			
Resolution	2160 x 3840 (4K UHD)			
Brightness	500 cd/m2			
Response Time	8 ms			
Color System	PAL / NTSC / Auto			
Field Frequency	60 Hz			
Contrast Ratio	1200 : 1	1500 : 1	4000 : 1	4000 : 1
View-angle (up/down/left/right)	89° / 89° / 89° / 89°			
System	Android Operating System			
Royal TS	B/S TS			
Media Format	avi/ flv/ mkv/ mp4 / mpeg / rm / rmvb/ ts/ wmv			
Text Format	avi/ flv/ mkv/ mp4 / mpeg / rm / rmvb/ ts/ wmv			
Picture Format	bmp / gif / jpeg / jpg / png			
CPU	Quad-Core ARM Cortex A53			
DDR	DDR4 2GB			
Internal Memory	EMMC 8GB (4GB Available)			
Wireless	Onboard , 802.11b/g/n			
Ethernet	Rj45 10M/100M Ethernet x 1			
USB	USB2.0 x 2			
Audio System	Built-in 8 Ω 10 w x 2 speakers			
Voltage	AC100V ~ 240V , 50/60Hz			
Consumption- Typical	<175 W			
Consumption- Standby	<1W			
Frame Material	Aluminum + Tempered Glass			
Dimensions (W xH xD) (mm)	583 x 1730 x 53	658 x 1800 x 53	734 x 1850 x 53	857 x 2000 x 53
Net Weight (KG)	36.0	44.0	47.0	62.0
Operating Temperature	0 to 50°C			
Storage Temperature	-20 to 60°C			
Included	Power Cord / Stand / Wheels			

FLOOR STAND DIGITAL SIGNAGE

DOUBLE PANEL DIGITAL SIGNAGE



EC-PSS55A

Display Panel	Panel Size	55 inch
	Display Area (H x V)(mm)	680.4 x 1209.6
	Display Mode	16 : 9
	LCD Type	LG-backlit LCD
	Resolution	1080 x 1920
	Brightness	420 cd/m2
	Response Time	8 ms
	Color System	PAL / NTSC / Auto
	Field Frequency	60 Hz
	Contrast Ratio	3500 : 1
Media Format	View-angle (up/down/left/right)	89° / 89° / 89° / 89°
	System	Android Operating System
	Royal TS	B/S TS
	Media Format	avi/ flv/ mkv/ mp4 / mpeg / rm / rmvb/ ts/ wmv
	Text Format	avi/ flv/ mkv/ mp4 / mpeg / rm / rmvb/ ts/ wmv
System	Picture Format	bmp / gif / jpeg / jpg / png
	CPU	Quad-Core ARM Cortex A17
	DDR	DDR3 2GB
	Internal Memory	EMMC 8GB (4GB Available)
	Wireless	Onboard , 802.11b/g/n
Interface	USB	USB2.0 x 1
Power	Audio System	Built-in 8 Ω 10 w x 2 speakers
	Voltage	AC 100 - 240V , 50/60Hz
	Consumption- Typical	<40 W
	Consumption- Standby	<1W
Physical Specifications	Frame Material	Aluminum + Metal Stage
	Dimensions (W x H x D) (mm)	Top: 1970 x 730 x 20.5 Base: 700 x 760 x 490
	Net Weight (KG)	52.0
Environment	Operating Temperature	0 to 40℃
Conditions	Storage Temperature	10 to 80℃
Accessories	Included	Power Cord



DOUBLE SIDE DIGITAL SIGNAGE WITH TRANSPARENT BOX

		EC-TSS43C	EC-TSS55C
Display Panel	Panel Size	43 inch	55 inch
	Display Area (H x V)(mm)	529.4 x 941.1	680.4 x 1209
	Display Mode	16 : 9	
	LCD Type	LG- IPS	
	Resolution	1080 x 1920	
	Brightness	500 cd/m2	
	Response Time	6 ms	
	Color System	PAL / NTSC / Auto	
	Field Frequency	60 Hz	
	Contrast Ratio	1200 : 1	
	View-angle (up/down/left/right)	89° / 89° / 89° / 89°	
Media Format	System	Android Operating System	
	Royal TS	B/S TS	
	Media Format	avi/ flv/ mkv/ mp4 / mpeg / rm / rmvb/ ts/ wmv	
	Text Format	avi/ flv/ mkv/ mp4 / mpeg / rm / rmvb/ ts/ wmv	
System	Picture Format	bmp / gif / jpeg / jpg / png	
	CPU	Quad-Core ARM Cortex A17	
	DDR	DDR3 2GB	
	Internal Memory	EMMC 8GB (4GB Available)	
	Wireless	Onboard , 802.11b/g/n	
Interface	HDMI	HDMI IN x 1 , HDMI OUT x 1	
	Ethernet	Rj45 10M/100M Ethernet x 1	
	USB	USB2.0 x 2	
Power	Voltage	AC 100 - 240V , 50/60Hz	
	Consumption- Typical	<200 W	<300 W
	Consumption- Standby	<1W	
Physical Specifications	Frame Material	Aluminum + Metal Stage	
	Dimensions (W xH xD) (mm)	Top : 583 x 1600 x 25.2 Base : 584 x 1600 x 500	Top : 734.8 x 1907.5 x 25.2 Base : 748.4 x 1907 x 500
Environment	Operating Temperature	0 to 60°C	
Conditions	Storage Temperature	10 to 80°C	
Accessories	Included	Power Cord	

DOUBLE SIDE DIGITAL SIGNAGE WITH TRANSPARENT BOX

TRANSPARENT SIGNAGE BOX



		EC-ECS55A
Display Panel	Panel Size	55 inch
	Display Area (H x V)(mm)	1218 x 689
	Display Mode	16 : 9
	Transparency (Trp.)	50% Transparency LCD Panel
	Resolution	1080 x 1920 (Up to 4K)
	Brightness	300 cd/m2
	Response Time	0.001 ms
	Color System	PAL / NTSC / Auto
	Field Frequency	60 Hz
	Contrast Ratio	100,000 : 1
	View-angle (up/down/left/right)	89° / 89° / 89° / 89°
Media Format	System	Android Operating System
	Royal TS	B/S TS
	Media Format	avi/ flv/ mkv/ mp4 / mpeg / rm / rmvb/ ts/ wmv
	Text Format	avi/ flv/ mkv/ mp4 / mpeg / rm / rmvb/ ts/ wmv
	Picture Format	bmp / gif / jpeg / jpg / png
System	CPU	Quad-Core ARM Cortex A17
	DDR	DDR3 2GB
	Internal Memory	EMMC 8GB (4GB Available)
	Wireless	Onboard , 802.11b/g/n
Interface	HDMI	HDMI IN x 1
	Ethernet	Rj45 10M/100M Ethernet x 1
	USB	USB2.0 x 2
Power	Voltage	AC 100- 240V , 50/60Hz
	Consumption- Typical	<110 W
	Consumption- Standby	<0.5W
Physical Specifications	Frame Material	Aluminum
	Dimensions (W xH xD) (mm)	1325 x 795 x 405
	Net Weight (KG)	70.0
Environment	Operating Temperature	0 to 50 °C
Conditions	Storage Temperature	-20 to 60 °C
Accessories	Included	Power Cord

TRANSPARENT SIGNAGE BOX



DOUBLE SIDE DIGITAL SIGNAGE

	EC-WSS43A	EC-WSS55A
Display Panel	Panel Size	43 inch
	Display Area (H x V)(mm)	941.1 x 529.4
	Display Mode	16 : 9
	LCD Type	LG-backlit LCD
	Resolution	1080 x 1920
	Brightness	420 cd/m2
	Response Time	8 ms
	Color System	PAL / NTSC / Auto
	Field Frequency	60 Hz
	Contrast Ratio	3500 : 1
	View-angle (up/down/left/right)	89° / 89° / 89° / 89°
	System	Android Operating System
Media Format	Royal TS	B/S TS
	Media Format	avi/ flv/ mkv/ mp4 / mpeg / rm / rmvb/ ts/ wmv
	Text Format	avi/ flv/ mkv/ mp4 / mpeg / rm / rmvb/ ts/ wmv
	Picture Format	bmp / gif / jpeg / jpg / png
System	CPU	Quad-Core ARM Cortex A17
	DDR	DDR3 2GB
	Internal Memory	EMMC 8GB (4GB Available)
	Wireless	Onboard , 802.11b/g/n
Interface	USB	USB2.0 x 2
Power	Audio System	Built-in 8 Ω 10 w x 2 speakers
	Voltage	AC 100 - 240V , 50/60Hz
	Consumption- Typical	<175 W
	Consumption- Standby	<1W
Physical Specifications	Frame Material	Aluminum + Tempered Glass
	Dimensions (W xH xD) (mm)	1123.5 x 680 x 21
	Net Weight (KG)	36.0
Environment	Operating Temperature	0 to 40°C
Conditions	Storage Temperature	10 to 60°C
Accessories	Included	Power Cord

TRANSPARENT OLED DIGITAL SIGNAGE



		EC-TDS55A	EC-TDS55B
Display Panel	Panel Size	55 inch	
	Display Area (H x V)(mm)	1209.6 x 680.4	
	Display Mode	16 : 9	
	Transparency (Try.)	38% Transparency OLCD Panel	
	Resolution	1920 x 1080 (Up to 4K)	
	Brightness	400 cd/m2	
	Response Time	60 ms	
	Color System	PAL / NTSC / Auto	
	Field Frequency	60 Hz	
	Contrast Ratio	100,000 : 1	
	View-angle (up/down/left/right)	89° / 89° / 89° / 89°	
Media Format	System	Android Operating System	
	Royal TS	B/S TS	
	Media Format	avi/ flv/ mkv/ mp4 / mpeg / rm / rmvb/ ts/ wmv	
	Text Format	avi/ flv/ mkv/ mp4 / mpeg / rm / rmvb/ ts/ wmv	
	Picture Format	bmp / gif / jpeg / jpg / png	
System	CPU	Quad-Core ARM Cortex A17	
	DDR	DDR3 2GB	
	Internal Memory	EMMC 8GB (4GB Available)	
	Wireless	Onboard , 802.11b/g/n	
Interface	HDMI	HDMI IN x 1	
	Ethernet	Rj45 10M/100M Ethernet x 1	
	USB	USB2.0 x 2	
Power	Voltage	AC 100 - 240V , 50/60Hz	
	Consumption- Typical	<110 W	
	Consumption- Standby	<0.5W	
Physical Specifications	Frame Material	Aluminum Stand	
	Dimensions (W x H x D) (mm)	977 x 1268 x 260	826 x 1750 x 504
	Net Weight (KG)	29.0	100.0
Environment	Operating Temperature	0 to 50 °C	
Conditions	Storage Temperature	-20 to 60 °C	
Accessories	Included	Power Cord	

TRANSPARENT OLED DIGITAL SIGNAGE

BAR TYPE DIGITAL SIGNAGE



EC-WDS37M		
Display Panel	Panel Size	37.7 inch
	Display Area (H x V)(mm)	1077 x 605.2
	Display Mode	16 : 3
	LCD Type	LG- IPS
	Resolution	1920 x 351
	Brightness	500 cd/m2
	Response Time	8 ms
	Color System	PAL / NTSC / Auto
	Field Frequency	60 Hz
	Contrast Ratio	1300 : 1
	View-angle (up/down/left/right)	89° / 89° / 89° / 89°
	System	Android Operating System
Media Format	Royal TS	B/S TS
	Media Format	avi/ flv/ mkv/ mp4 / mpeg / rm / rmvb/ ts/ wmv
	Text Format	avi/ flv/ mkv/ mp4 / mpeg / rm / rmvb/ ts/ wmv
	Picture Format	bmp / gif / jpeg / jpg / png
System	CPU	Quad-Core ARM Cortex A53
	DDR	DDR4 2GB
	Internal Memory	EMMC 8GB (4GB Available)
	Wireless	Onboard , 802.11b/g/n
Interface	HDMI	HDMI IN x 1
	Ethernet	Rj45 10M/100M Ethernet x 1
	USB	USB2.0 x 1
Power	Voltage	AC 100- 240V , 50/60Hz
	Consumption- Typical	<40 W
	Consumption- Standby	<1W
Physical Specifications	Frame Material	Aluminum + Metal Stage
	Dimensions (W xH xD) (mm)	992 x 228 x 49
	Net Weight (KG)	25.0
Environment	Operating Temperature	0 to 50°C
Conditions	Storage Temperature	10 to 60°C
Accessories	Included	Power Cord

BAR TYPE DIGITAL SIGNAGE

COMBINATION PANEL



	EC-WBS49A	EC-WBS55A
Panel Size	49 inch	55 inch
Edge (mm)	3.5	
Display Area (H x V)(mm)	529.4 x 941.1	680.4 x 1209
Display Mode	16 : 9	
LCD Type	TFT-LCD	
Display Color	16.7M	
Display Panel Resolution	1920 x 1080	
Brightness	500 cd/m2	
Response Time	8 ms	
Field Frequency	50/ 60/ 70 Hz	
Contrast	1400 : 1	
View-angle (up/down/left/right)	89° / 89° / 89° / 89°	
Interface	HDMI x 1 , DVI x 1	
Audio Input	L1/R1(AV) , L2/R2(VGA)	
Voltage	AC 100- 240V , 50/60Hz	
Power	<200 W	
Consumption- Standby	<1W	
Frame Material	Aluminum	
Physical Specifications		
Dimensions (W xH xD) (mm)	1077.6 x 607.8 x 108	1213.5 x 684.3 x 108
Net Weight (KG)	25	36
Environment	Operating Temperature	
Conditions	0 to 50℃	
	Storage Temperature	
	-20 to 60℃	



COMBINATION WALL



Unit A , 2/F, Mai Tak Industrial Building,
No.221, Wai Yip Street, Kwun Tong, Kowloon, Hong Kong
TEL.:(852)3590 6397
FAX.:(852)3590 6497
E-MAIL:sales@ecline.com.hk

HEADQUARTER

EC Line America S.A. DE C.V.
PONIENTE 134 NO.680,
COLONIA INDUSTRIAL VALLEJO,
CP 02300, MEXICO, D.F.
Tel.: (5281) 55243914

ASIA DISTRIBUTOR

Philippines
Tel: (632) 7505555
705 Regray Commercial Bldg.
JP Rizal st. corner Pilillia st., Brgy.
Valenzuela, Makati City,
Philippines 1208

Malaysia
Tel: (603) 80711501
No 63, Jalan PBS 14/3,
Taman Perindustrian Bukit Serdang,
43300 Seri Kembangan,
Selangor, Malaysia

New Zealand
Tel: (275) 222298
Unit A1, 710 Great South Road,
Manukau City,
Auckland,
New Zealand

Jakarta, Indonesia
Tel: (6221) 5306678
Jl.Raya Kebayoran Lama No.8
Kel.Grogol Utara,
Kec. Kebayoran Lama
Jakarta Selatan 12210

SALES BRANCH

Guadalajara, Mexico
Tel: (5133) 36306123

Monterrey, Mexico
Tel: (5581) 83712394

RESELLER

Australia
Tel: (61) 1300 638088
Cyprus
Tel: (357) 26600505

Canada
Tel: (1604) 270 9898
Myanmar
Tel: (95) 976071 651

Georgia
Tel: (995) 32922240

China
Tel: (86) 15507575527