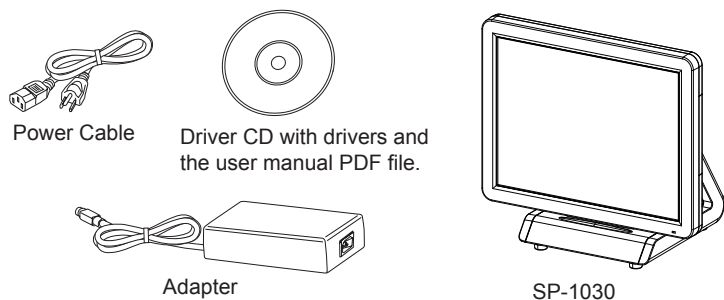


# PAR//NER SP-1030 USER GUIDE

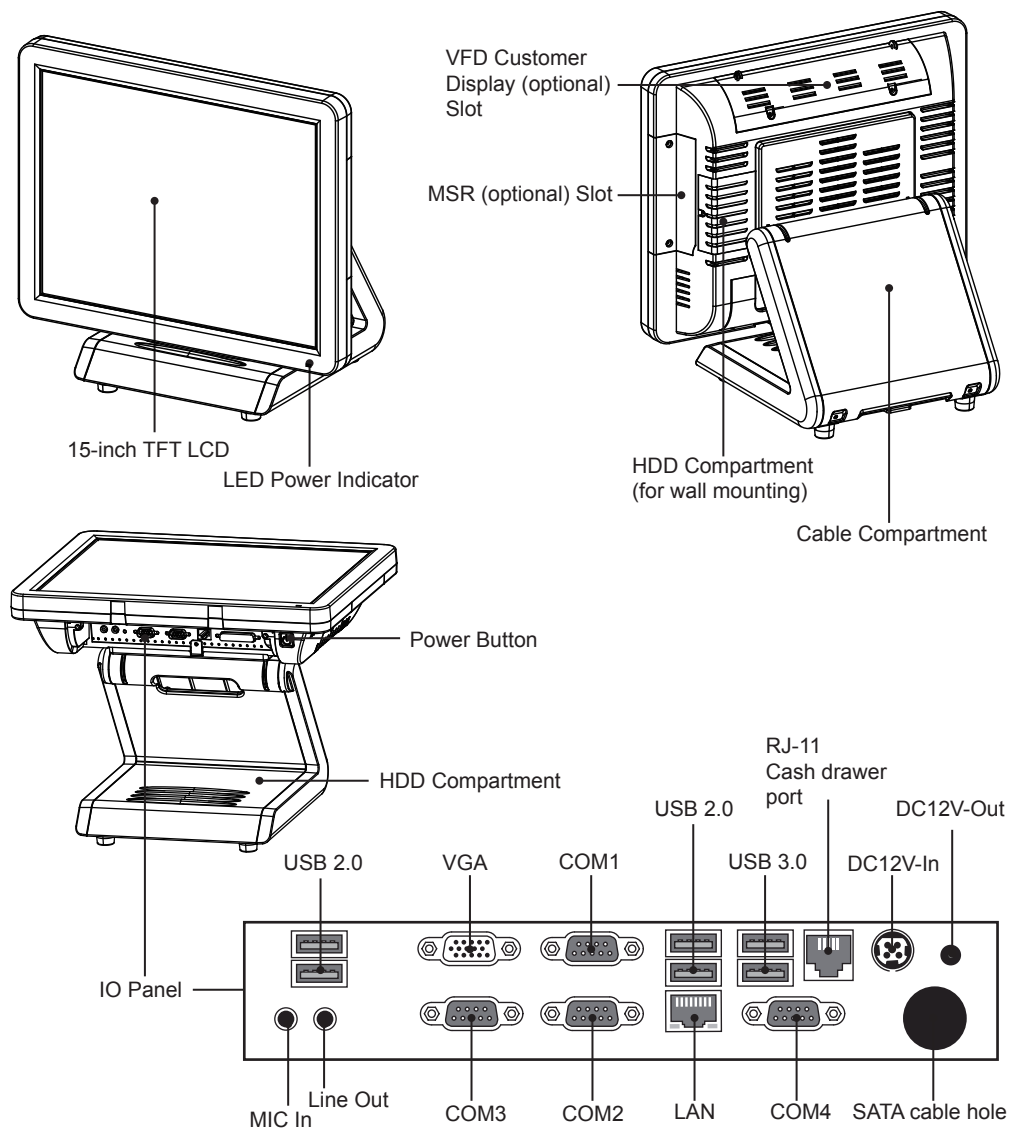
## Unpack the box and check the contents.

The SP-1030 and its accessories are packed in a cardboard carton with foam padding for protection during shipment. Carefully unpack the system and keep the packing materials for future use.

Verify that all of the items shown below are included in the box. If an item is missing or appears to be damaged, contact your Partner Tech dealer immediately.



## Identifying components



**WARNING**

*This is Class A Product. In domestic environment this product may cause radio interference in which case the user may be required to take adequate measures.*



**警告使用者**

這是甲類的資訊產品，在居住的環境中使用時，可能會造成射頻干擾，在這種情況下，使用者會被要求採取某些適當的對策。

## Safety information

Before installing and using the machine, take note of the following precautions:

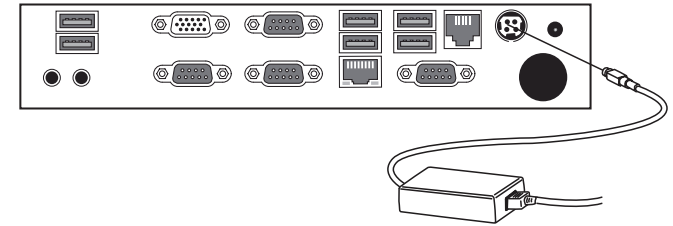
- Do not place the unit on an unstable surface, cart, or stand.
- Do not block the slots and opening on the unit, which are provided for ventilation.
- Only use the power source indicated on the marking label. If you are not sure, contact your dealer or the Power Company.
- When replacing parts, ensure that your service technician uses parts specified by the manufacturer.
- Do not place anything on the power cord. Place the power cord where it will not be in the way of foot traffic.

## Specification

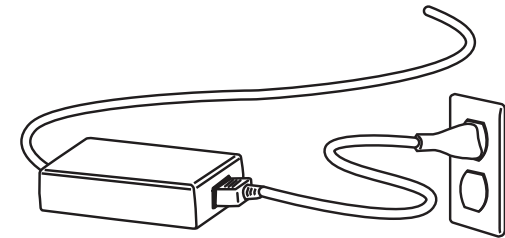
Item	SP-1030
CPU	Intel IVY or Sandy LGA1155 CPU Celeron G540 2.5Ghz dual core, Ivy Bridge i3-3220 3.3 GHz dual core, Ivy Bridge i5-3550S 3.0 GHz Quad core
Chipset	Intel B75 chipset
LCD	15" LCD, resolution 1024 x 768 LED backlight
Touch	Bezel free resistive touch (default) 5-wire resistive touch screen(option)/ Projected capacitive touch screen (option)
Construction	Plastic back cover
Memory	2GB Standard, Maximum 16 GB (2 x DDR3 SO-DIMM Slots)
Ethernet	Onboard 10/100/1000 BASE-T Gigabit Ethernet
Storage	Internal 2.5" type SATA HDD x 1 in base, option 2nd HDD or SSD in base
External I/O Interface	6 * COM ports (COM1~4 at the I/O panel, COM5 Reserved, COM6 for VFD) 1 * DB-15 VGA port 2 * USB 3.0 + 4 * USB 2.0 1 * RJ11 port supports 2 cash drawer(DC+24v) 1 * RJ-45 LAN port with activity and link LEDs 2 * Audio(1 *Line-out, 1 *MIC-in) 1 * DC+12V output 1 * DC+12V input power-jack
Expansion Options	1 * Mini PCI-e, Support Wireless Module Power USB 12Vx1, 24Vx1
Optional Peripherals	3 tracks magnetic reader Customer display module (2 x 20 VFD) Biometric Reader, Smart Card Reader, I-Button, RFID reader 2nd 11.6" monitor (Dual screen/15" monitor/CD-70)
Operation System	POSready7, POSready 2009, Linux (ubuntu, ), Windows 8.1 Industry Pro Retail
Power Supply	AC100~240V/DC12V, 180 watts
Physical Dimensions	360mm (W) x233mm (D) x 323mm (H)
Operating Temp	0°C ~ +40°C
Storage Temperature	-20°C ~ +60°C
Humidity	15%~80%
Certification	CE, FCC, LVD, VCCI, BSMI, 3C, Class A

## Quick start

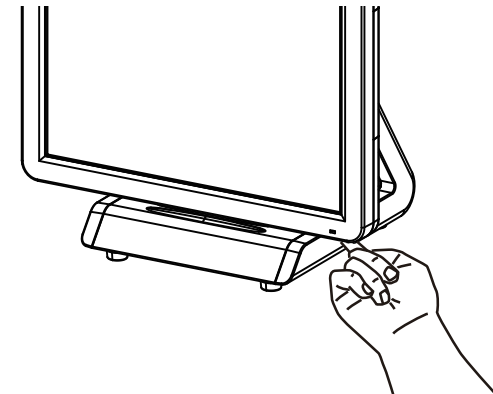
1. Connect the power cable to the DC-IN connector located on the right side of the SP-1030 I/O panel.



2. Plug the power cable into an electrical outlet.



3. Press the power button on the right underside of the SP-1030.



**Note:** Press once to power on the system. Press it for 4~5 seconds to force the system power off.